

THE

# GEEKBOX

METAL EDITION

## 5 DIFFICULTY LEVELS TO CHALLENGE YOUR INNER METAL HEAD

Smarty: Easy  
Genius: Harder

Super Smarty: Medium  
Super Genius: Hardest

Almost Genius: Hard



### PUZZLE NO. 1

Difficulty Level: Super Smarty

**OBJECTIVE:**

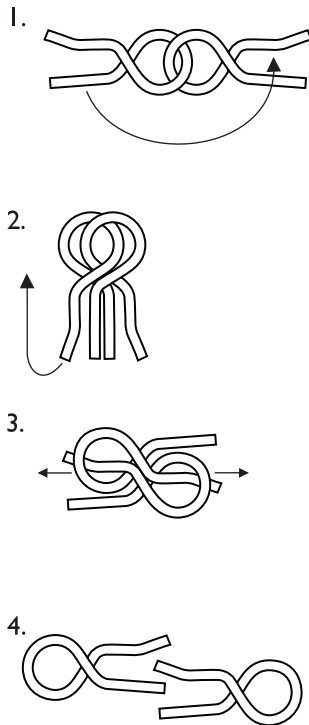
Disentangle the two pieces

**HINT:**

Line up the pieces vertically so they mirror each other across their link

**REATTACHING:**

Slide the bent ends into the loops of the opposite pieces, then pull the pieces together



### PUZZLE NO. 2

Difficulty Level: Super Genius

**OBJECTIVE:**

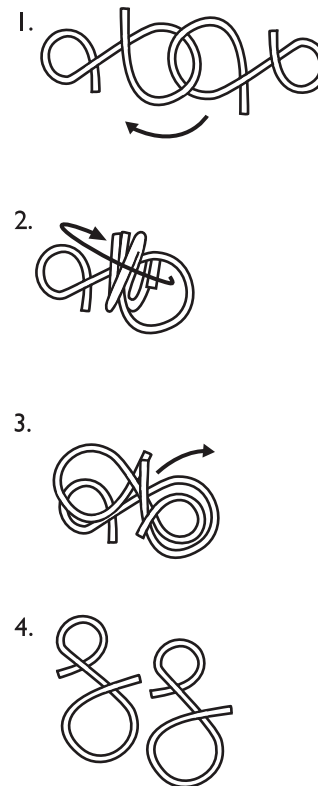
Disentangle the two pieces

**HINT:**

Guide the two pieces so their gaps are next to each other, then twist

**REATTACHING:**

Arrange the pieces so the gaps are touching, then twist the two pieces towards each other; if a twist isn't working, try wiggling



### PUZZLE NO. 3

Difficulty Level: Smarty

**OBJECTIVE:**

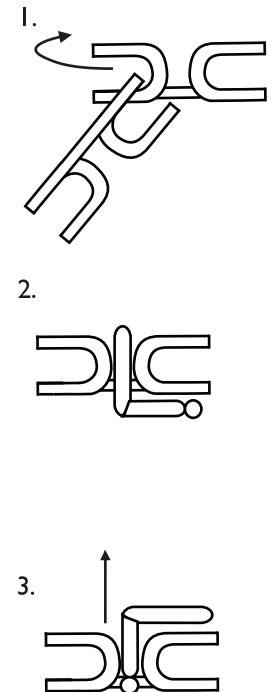
Disentangle the two pieces

**HINT:**

Align the two pieces so their gaps are perpendicular to each other

**REATTACHING:**

Place the pieces so they are perpendicular to each other with their gaps touching, then drop the top piece into the bottom piece and pull to the right



AGES  
8+



DESIGNED BY MARBLES: BRAIN WORKSHOP™ IN CHICAGO, ILLINOIS  
(877) 527-2460 | WWW.MARBLESTHEBRAINSTORE.COM

marbles  
brain workshop™

## 5 DIFFICULTY LEVELS TO CHALLENGE YOUR INNER METAL HEAD

Smarty: Easy  
Genius: Harder

Super Smarty: Medium  
Super Genius: Hardest

Almost Genius: Hard



### PUZZLE NO. 4

Difficulty Level: Smarty

**OBJECTIVE:**

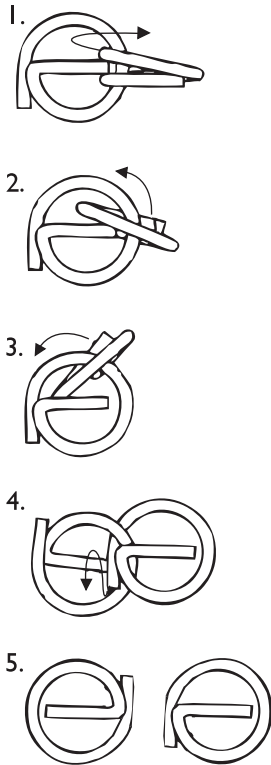
Disentangle the two pieces

**HINT:**

Rotate the outside piece into the inside piece, then around the outer edge

**REATTACHING:**

Arrange the pieces so they are perpendicular to each other and their ends are pointed in the same direction. Then, slide the vertical piece into the horizontal piece, rotate it 90 degrees, slide it another 90 degrees around the outer edge, and rotate it into the final tangled position



### PUZZLE NO. 5

Difficulty Level: Genius

**OBJECTIVE:**

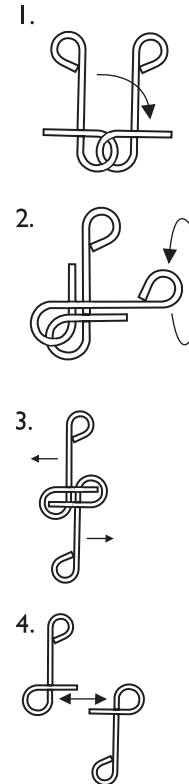
Disentangle the two pieces

**HINT:**

Line up the pieces so they mirror each other across their link

**REATTACHING:**

Slide the ends of the large loops into the large loops of the opposite pieces, then twist the pieces towards each other



### PUZZLE NO. 6

Difficulty Level: Almost Genius

**OBJECTIVE:**

Disentangle the two pieces

**HINT:**

Align the pieces so their gaps are perpendicular to each other

**REATTACHING:**

Place the pieces so they are perpendicular to each other with their gaps touching, then slide the top piece into the bottom piece

